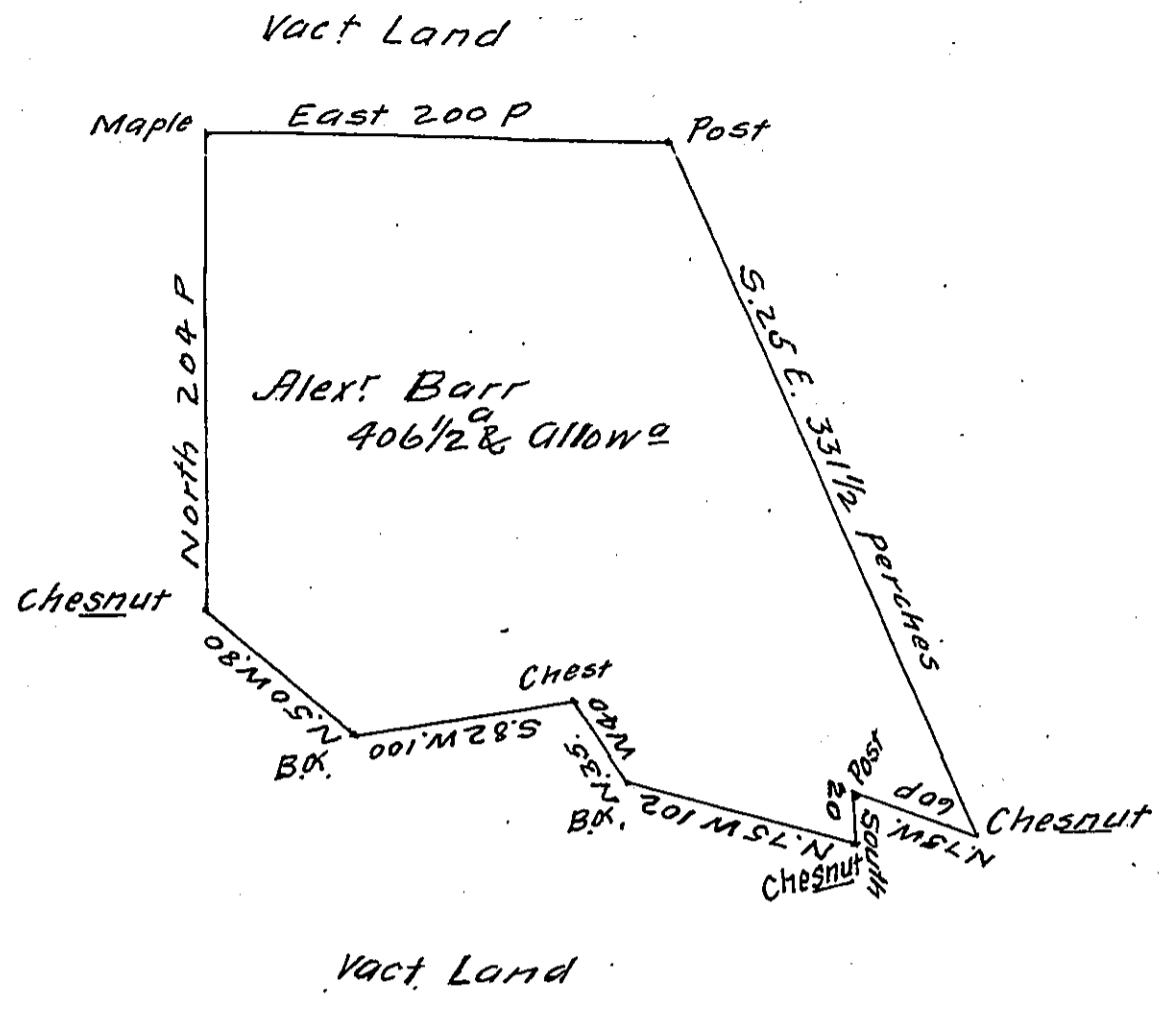


A. 73. 204 (2)



Surveyd to Alexander Barr on the 2<sup>d</sup> day of July 1785, the above described tract of Four hundred & six acres & an half acre & allowance of six p cent. Situate on the dividing ridge between Blacklick Creek and Conemaugh near the path from Braken's Mills to Samuel Dixon's & about two miles from the Chesnut ridge in Westmoreland County.

By War: of 16<sup>th</sup> March 1785

Joshua Elder D.S

John Lukens Esq: S. Genl

IN TESTIMONY that the above is a copy of the original remaining on file in the Department of Internal Affairs of Pennsylvania, made conformably to an Act of Assembly approved the 16th day of February, 1833, I have hereunto set my Hand and caused the Seal of said Department to be affixed at Harrisburg, this tenth day of August 1911

*Nevy Howell*  
Secretary of Internal Affairs.